

M-15 Interchange

Detoured Ramps
SB M-15 to NB I-75
NB M-15 to NB I-75

Ramps not effected
by construction

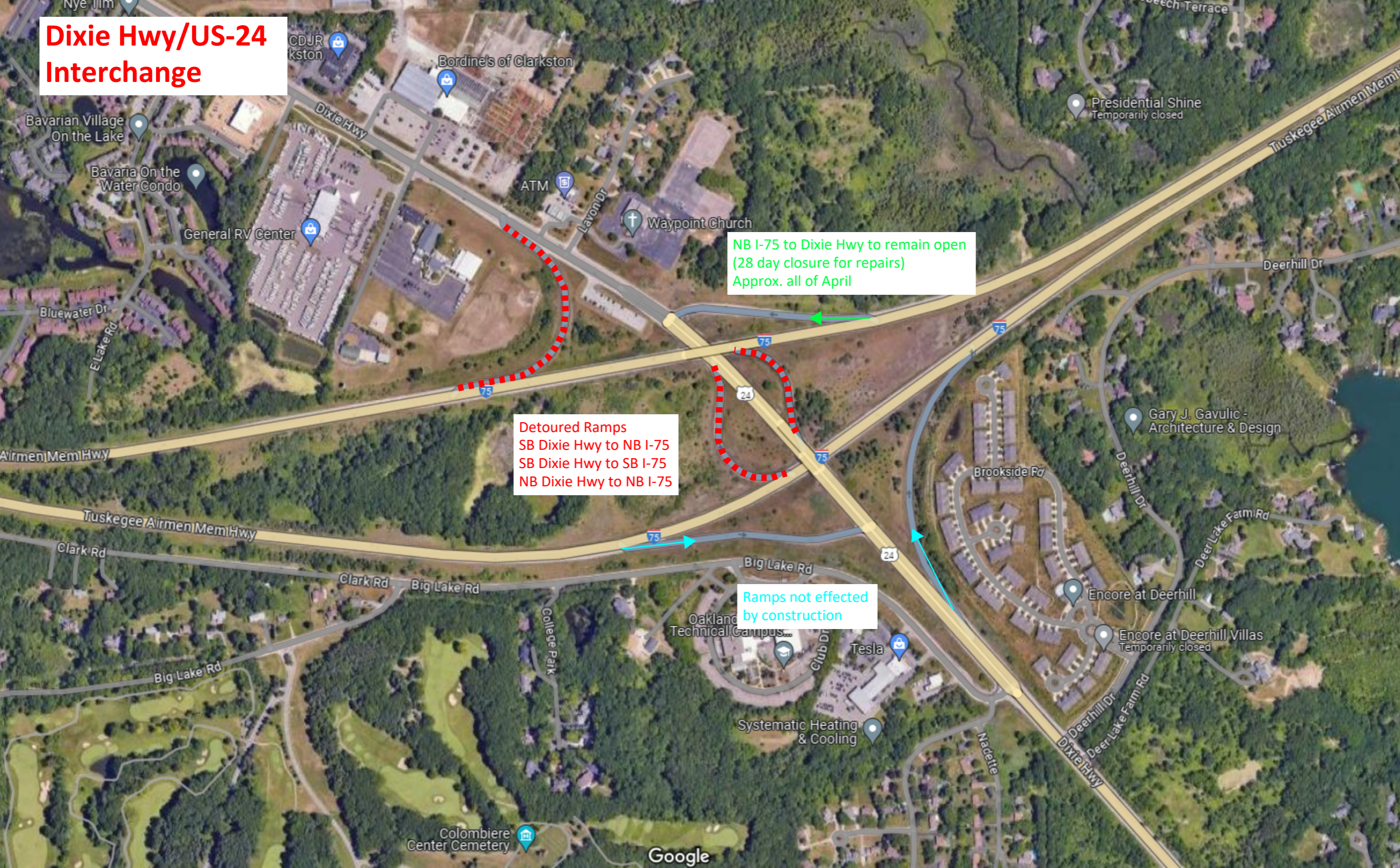


Dixie Hwy/US-24 Interchange

NB I-75 to Dixie Hwy to remain open
(28 day closure for repairs)
Approx. all of April

Detoured Ramps
SB Dixie Hwy to NB I-75
SB Dixie Hwy to SB I-75
NB Dixie Hwy to NB I-75

Ramps not effected
by construction



E Holly Rd Interchange



Ramps not effected by construction

Detoured Ramp
E Holly Rd to NB I-75

NB I-75 to E Holly Rd to remain open
(14 day closure for repairs)
Approx. mid to late June

Grange Hall Rd Interchange

Ramps not effected by construction

Grange Hall Rd to NB I-75 to remain open (14 day closure for repairs) Approx. end July to early August

Detoured Ramp NB I-75 to Grange Hall Rd



Saginaw Rd/Dixie Hwy Interchange

Detoured Ramps
SB I-75 to SB Dixie Hwy/Saginaw Rd
SB Saginaw Rd to SB I-75
NB Dixie Hwy to NB I-75

NB I-75 to NB Dixie Hwy Saginaw Rd to remain open
(14 day closure for repairs)
Approx. early to mid September

